



BHD01



BHD02

BHD Series Hazardous Area Junction Box

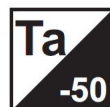
Spec Sheet

Overview

The Tormin BHD junction box and mounting element is suitable for use with lighting equipment installed in almost any hazardous area.

Features & Benefits

- The junction box is light weight and easy to install.
- Anti-corrosive coating.
- ATEX Certified zone 1, zone 21, zone 2 & zone 22, Certified by Eurofins product testing, Italy.
- 5 year warranty.



Technical Specification

Description: BHD Series Hazardous Area Junction Box

Recommended Product Location: Hazardous areas

PRODUCT DETAILS	
Ex mark	Ex db IIC T6 Gb, Ex tb IIIC T80°C Db IP66,
Voltage	≤VAC 50/60Hz
IP Rating	IP66
Typical Lumens per watt	N/A
Colour Rendering	N/A
LED Module	N/A
Beam angle	N/A
Operating Temperature	-50°C/+60°C
Colour Temperature	N/A
Power Factor	N/A
Driver	N/A
Dimension	185*185*75mm(BHD01A/B); 116*116*75mm(BHD02)
Warranty	5 Year Repair / Replace Warranty
Number of Cable Inlets	1~3(BHD01A/B);1~4(BHD02)
Screw Thread of Cable Inlets	G3/4"(BHD01A); M20*1.5, M25*1.5, NPT1/2", NPT3/4" (BHD01B/BHD02)
Net Weight	1.2KGS(BHD01A/B); 0.8KGS(BHD02)

PRODUCT OPTIONS	
Occupancy Sensor	N/A
Light level sensor	N/A
Remote Programmable Sensor	N/A
High borosilicate glass front	Fitted as standard
RGB	N/A
18~43VAC/18~55VDC	✓
Emergency	N/A
Fixed Bracket Mounting	✓

Ambient Temperature / Temperature Group

Circuit Watts	TA ≤40°C
N/A	T6

Cable Entry

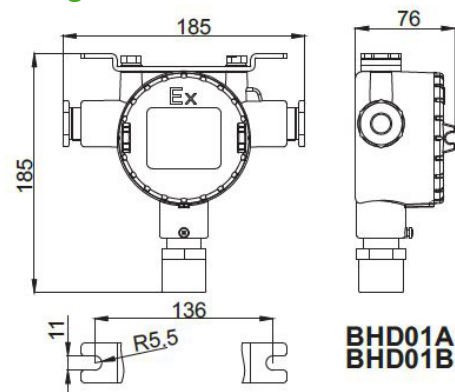


BHD01A

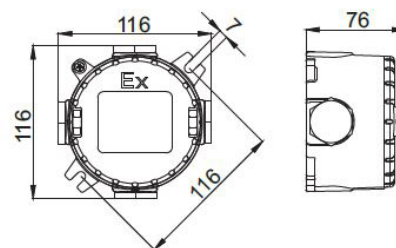


BHD01B/BHD02

Diagram of BHD series



BHD01A
BHD01B



BHD02



The Tormin BHD series is covered by our 5 Year repair/replace Warranty. Warranty upgrade packages available. UK purchases, warranty handled through Carbon8Lighting.

www.carbon8lighting.co.uk
01256 300031
sales@c8l.co.uk

CARBON8
LIGHTING

