



BC5402A Series LED Hazardous Area

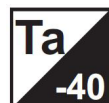
Spec Sheet

Overview

Designed primarily for maritime use, The Tormin BC5402A Hazardous area LED is suitable for dangerous gas areas and other hazardous areas.

Features & Benefits

- Seawater resistant anodized aluminium housing.
- Suitable for internal and external use.
- Independent junction box design, convenient wiring, can be used in parallel with multiple luminaires.
- Exposed fasteners are all made of 304 stainless steel (Ocean platforms require custom 316 stainless steel).
- For use in ATEX zones 1 & zone 2, zone 21 & zone 22, Certified by Eurofins product testing, Italy.
- 5 year warranty.



Technical Specification

Description: BC5402A Series LED Hazardous Area

Recommended Product Location: Hazardous areas

PRODUCT DETAILS	
Ex mark	Ex eb me op is IIC T6/T5/T4 Gb, Ex tb op is IIIC T80°C/T95°C/T130°C Db,
Voltage	108-264 VAC(20W~60W)/185-264VAC(80W) 50/60Hz
IP Rating	IP66
Typical Lumens per watt	155lm/W
Colour Rendering	>0.70
LED Module	lumileds
Beam angle	/
Operating Temperature	-40°C to +40°C/+55°C
Colour Temperature	5000k (4000k & 6000k available special order)
Power Factor	>0.92
Driver	N/A
Dimension	700*182*68mm(20W/30W/40W); 1150*182*68mm(60W/80W)
Warranty	5 Year Repair / Replace Warranty
Number of Cable Inlets	1~2;(3~4 optional)
Screw Thread of Cable Inlets	M20*1.5, M25*1.5, NPT1/2", NPT3/4"
Net Weight	3.2KGS(20W/30W/40W); 4.5KGS(60W);4.7KGS(80W)

PRODUCT OPTIONS	
Occupancy Sensor	N/A
Light level sensor	N/A
Remote Programmable Sensor	N/A
High borosilicate glass front	Fitted as standard
RGB	N/A
18~43VAC/18~55VDC	N/A
Emergency	25w. 15w
Fixed Bracket Mounting	✓

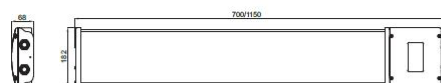
Ambient Temperature / Temperature Group

Circuit Watts	TA ≤40°C	TA ≤55°C
20W	T6	T5
30W	T6	T5
40W	T6	T5
60W	T6	T4
80W	T4	T4

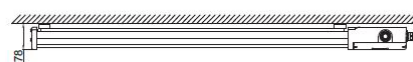
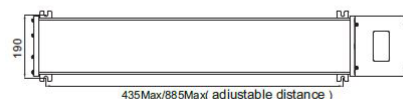
Performance Chart

LED POWER	CIRCUIT WATTS	TYPICAL LUMENS
17.60w	20w	3100lm
26.40w	30w	4650lm
35.20w	40w	6200lm
52.80w	60w	9300lm
70.40w	80w	12400lm

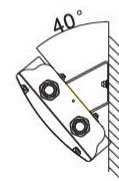
Diagram of BC5402



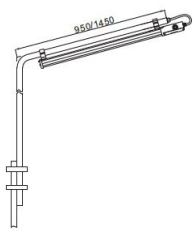
1. Bracket mounting(Standard)



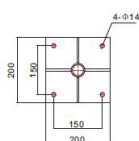
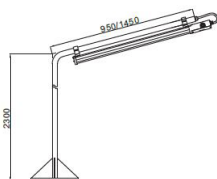
2. Side wall mounting (40 degree)



3. Guardrail installation



4. Flange mounting



The Tormin BC5402A is covered by our 5 Year repair/replace Warranty. Warranty upgrade packages available. UK purchases, warranty handled through Carbon8Lighting.

www.carbon8lighting.co.uk
01256 300031
sales@c8l.co.uk

CARBON8
LIGHTING

